

SEE  
**Community  
Connection**  
HERE



Summer 2024

# City Council



**Mayor  
Robert Halfacre**



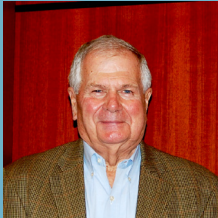
**Lillian  
Boatwright**



**Bob  
Brookover**



**John  
Ducworth**



**John  
Fulmer**



**Alesia  
Smith**



**Catherine  
Watt**

# City Officials

City Administrator	Andy Blondeau
Deputy City Administrator	Alli Gante
City Clerk	Jeremiah Jackson

# City Directory

Administration	653-2030
African American Museum	654-2944
Arts Center	633-5051
Business Licensing	624-1147
Engineering	624-1126
Finance	653-2039
Fire and EMS	624-1165
Municipal Court	653-2045
Parks and Recreation	624-1120
Planning and Codes	653-2050
Police	624-2000
Public Works	653-2053
Stormwater	653-2071
Transit	654-2287
Urban/Park Land Management	624-1120
Utilities	653-2046
Utility Billing	653-2035

# Inside this Issue

Message from the Mayor.....	3
See You on City Council.....	4
Shred Day Recap.....	4
See You Here...For the Next 20 Years.....	5
State of Clemson.....	5
Clemson Music Fest 2024.....	6
Snow Recreation Community Access.....	6
Recreation Refresh.....	7
See Athletic Achievements Here.....	8
See Recognition Here.....	9
See Diversity Here.....	10 - 11
<i>ClemsonLIFE Day, Women's History Month, Black History Month Honorees, Mark Your Calendar, ADA Legislation</i>	
See Sustainability Here.....	12 - 13
See You at Jaycee Park.....	13
See Infrastructure Improvements Here.....	14 - 15
<i>Sanitary Sewer Maintenance, ARPA Projects, Lead Service Line Program Update</i>	
Annual Water Quality Report.....	15
Fire Marshal Minute.....	16
Mosquito Fogging Schedule.....	16
South Carolina Botanical Gardens.....	17
Central Clemson Recreation Center Programs.....	17
Clemson Child Development Center Updates.....	18
Summer Reading Program.....	19
On the Ave June Dates.....	19
Pop in the Park.....	20
Clemson Farmers Market.....	20
Clemson Area Youth Theatre Summer Workshops.....	20
Checking in with CAAAM.....	21
Community Services and Enrichment.....	22
<i>OLLI, Community Foundation of Greater Clemson, Bright By Text, SC First 5</i>	
See Information Here.....	23
<i>Boards and Commissions Meetings Calendar, Municipal Court Hours, Conversations with Council Update, Upcoming City Holidays, CATbus Summer Schedule, Stay Informed and Updated</i>	
Light the Lake.....	24

## On the Cover

**Mt Joy performs on stage at the inaugural Clemson Music Festival on April 20th, 2024.**

**Read more about the Clemson Music Festival on page 6**

**Photo by @willenbrock.photography**

**Community Connection Editor**

**Sarah Wickham**



# Message from the Mayor

When I sit down to write these messages, I always strive to highlight the positives in our community. Be it our accomplishments, a focus on one of our amazing citizens or a summary of upcoming initiatives, I never have a shortage of topics to choose from. This Spring has undoubtedly proved challenging, but there is still an abundance of good to share. I want this message to highlight ALL that our City employees do for us in hopes that it will provide an understanding as to why it is crucial to protect our financial well-being. Our City workforce and our ability to continue improving your parks, arts and cultural opportunities, recreational offerings for your children, and so much more are dependent on a strong financial foundation.



Each February, City staff and officials begin the budget planning process. The analysis involved includes both a financial review and an intense reflection of our previous year's accomplishments plus an outlining of future goals. As of 220 days into our fiscal year, I am humbled at the dedication of our staff and how much they have already accomplished.

- Our utilities crews ensure access to safe drinking water as well as a sanitary sewer system. To that end, they have completed 3,639 work orders and 117 stormwater work orders and have conducted 200 stormwater inspections. The billing department has opened 2,577 new accounts and processed over 52,000 payments,
- Public Works keeps our City clean of trash and debris. They have removed more than 13 million pounds of material from the City. Additionally, the City's recycling drop-off center has taken in 326,800 pounds of recyclables.
- Urban and Park Land Management maintains the grounds in all parks and public spaces. They've maintained 100 acres of decorative bed areas and 7.5 miles of highway right of way. They have picked up 6,500 pounds of litter and planted 66 trees.
- The Parks and Recreation Department is the center of the City's athletic programs as well as many camps and community events. They have served over 16,000 program participants and hosted three state tournaments. The Kilgore Park Play structure has been replaced, and Dawson Park has a new restroom, picnic shelter, and upgraded basketball goals. The Rec Center (shared with Central) has re-plastered both pools.
- In the Arts and Culture sphere of the City, we are fortunate to have The Arts Center and The Clemson Area African American Museum. Among other things, The Arts Center started Pop in the Park events and CAAAM hosted the Black History Month luncheon and installed the "Where I'm From" art exhibit by artist and CAAAM program assistant Felicia Greenlee.
- Clemson Area Transit has been providing fare free transportation in the Clemson area for nearly three decades. They've logged over 348,000 miles and carried more than 728,000 passengers so far this year.
- In regards to public safety, our police officers spend countless hours protecting our community. They have driven over 300,000 miles patrolling the City, have made 42,000 citizen contacts and 6,000 vehicle stops, and responded to 600 car accidents. Our Municipal Court staff are equally busy and have closed 1,905 non-jury cases and resolved 355 jury trials. The Fire Marshal has conducted 522 fire inspections, and our building inspectors have conducted 4,784 building inspections to ensure safe dwellings and public spaces.
- Planning and Development staff have issued 367 single family residential permits and 102 commercial construction permits.
- Our small but mighty finance department processes payroll, pays our vendors, and facilitates department budget meetings as we prepare for the next fiscal year. This department is also credited for our clean audit!
- The Business License Administrator and License Inspector have processed over 1,500 licenses and are putting the final touches on "renewal season."
- Clemson Music Fest, On the Ave downtown events, local business promotion, Leadership Clemson, the Community Connection (this publication) and record- eeping are just some of the things the City Administration Department is responsible for!
- The City's Information Technology Department keeps our City operational by developing and maintaining the programs necessary for our employees to successfully perform their jobs. They also play a huge role in safety and recently installed 38 Verdaka cameras and also meet the technology requirements of our officers.
- Our HR department works hard to ensure that our City employees are happy, healthy, and able to provide the services our City requires. They are committed to providing competitive wages and benefits as well as a safe, comfortable work environment to encourage workforce contentment and longevity.

In last summer's message, I wrote about what makes Clemson special and unique. It's the people. We are blessed with some incredible residents and an amazing City team that is dedicated to serving our community and truly take pride in their work. This list of their accomplishments and duties is impressive, but just a part of what they do on our behalf every day. Next time you get the opportunity to interact with someone who works to make your City better, please take a minute to thank them...I can't do it enough!

As always, I want to hear from you! I use social media as a way to distribute information but never as a catalyst for conversation. Call me. If you see me out in the community, stop me. I am happy to sit down over a cup of coffee. Let's talk!

**Go Tigers!**

**Mayor Robert Halfacre**

# See You on City Council

Candidate Filing for November 2024 Election  
Noon, July 18th, 2024 - Noon, August 1st, 2024

The Board of Voter Registration and Elections of Pickens County will be conducting the City of Clemson Municipal Election on November 05, 2024. This is a nonpartisan election and no party affiliation shall be placed on the ballot. The following offices will be on the ballot for Clemson: Three (3) City Council Seats and one (1) Mayoral Seat. The three City Council seats are currently held by Bob Brookover, John Ducworth, and Catherine Watt. The Mayoral seat is currently held by Robert Halfacre.

Registered voters who have been a resident of the City of Clemson for a period of not less than six (6) months immediately preceding the date of this election may file as a candidate beginning at noon on July 18th, 2024, until filing closes at noon on August 1st, 2024. This is a nonpartisan election, and no party affiliation shall be placed on the ballot. These newly elected terms will begin January 2025 and end December 2028.

Candidates will file with Jeremiah Jackson, City Clerk, at Clemson City Hall (1250 Tiger Boulevard, Suite 1, Clemson, SC 29631) during normal business hours (Monday through Friday, 8am to 5pm). At the time of filing, each candidate must submit a completed Statement of Candidacy Form and pay the \$10 filing fee.

Candidates are required to file a Statement of Economic Interests and a Campaign Disclosure online with the State Ethics Commission at <https://ethics.sc.gov>. Contact the State Ethics Commission for more information. (Please Note: If not done in a timely manner, you may be subject to a fine by the Ethics Commission.)

For more information on Candidate Filing or to download a Statement of Candidacy, visit <https://pickenselections.org>.

## Pickens County Needs Poll Workers!

The Board of Elections is looking for dedicated individuals who take pride in their work, are patient, enjoy working with people, take direction well, and pay attention to detail.

**Duties include** voter registration qualification, activating voting machines, giving voting instructions, and maintaining orderly flow at the polling place.

### Requirements

- Must be registered to vote in South Carolina. (Not required for students ages 16-17.)
- Must attend mandatory 3 hour training session for each election cycle.
- Assist in the setup of the polling place prior to each election.
- Help conduct the election at the assigned precinct from 6 AM until all closing procedures are complete.
- Must have transportation to and from assigned polling place within a reasonable distance of home.
- Physical requirements include standing, bending, stooping, assisting 1-2 others in lifting voting machines weighing approximately 25 lbs., normal vision, and manual/physical dexterity.

## Shred Day 2024



The City of Clemson's annual Shred Day was held May 4th, 2024. This year, 11,720 pounds - or 5.86 tons - of paper were shredded by Shred-A-Way! Attendees also donated 538 pounds of non-perishable food items and \$1,580 for Clemson Community Care! Thank you to everyone who donated! Thank you also to Scout Troop 161 Clemson, SC (Blue Ridge Council), Mayor Halfacre, and Council Member John Ducworth for helping with Shred Day!

Next year's event is tentatively scheduled for the first Saturday in May.





## What is a comprehensive plan?

A Comprehensive Plan is a blueprint for the future. It is a community vision that will guide the City for the next 20 years. The City of Clemson Comprehensive Plan will result in a set of policies that direct future growth and development. Additionally, the creation of a Plan can lead to potential strategies that will help effectively guide Clemson leaders as they make substantive and thoughtful decisions for the community.



## Why is the City developing a comprehensive plan?

The City is required by South Carolina state law to adopt a comprehensive plan. This plan will outline Clemson's existing conditions, describe future goals and objectives for development, and include an action plan on how to achieve these goals and objectives. This plan will address Land Use and Development, Transportation and Mobility, Community Facilities and Infrastructure, Natural Resources and Open Spaces, and Cultural Resources.



## What happens to other plans we already have?

Existing plans are an important part of the City of Clemson Comprehensive Plan process. These plans will inform the new Comprehensive Plan, and, in some cases, will be incorporated into the plan if the goals and vision are still consistent with the aspirations of the community today.



## How do I get involved?

Ultimately, the Planning Commission and City Council will approve and adopt the City of Clemson Comprehensive Plan, but the City is committed to involving residents, businesses, and workers in the process to craft a community vision for City's future. The planning process is designed to promote community involvement and encourage citizen participation in a number of activities, including community visioning and mapping and the creation of community goals and objectives.

Community members have already had some opportunities to participate, most notably with the community visioning workshop on March 12th, but also through online questionnaires, DIY Workshop Kits, and the ability to map issues and opportunities on the project's Map Social. The project website will continue to post news and updates throughout the process, including opportunities for feedback and engagement.

Visit the project website at <https://clemson-sc-comp-plan-hlplanning.hub.arcgis.com/>  
or contact the Planning and Development department at 864-653-2050.



To commemorate President Clements's 10 years at Clemson - and as a nod to this pickleball partnership - Halfacre presented Clements with a gift from the City: a custom Clemson-branded Pickleball Paddle.

## State of Clemson

The Clemson Area Chamber of Commerce hosted the State of Clemson luncheon in February. Mayor Halfacre and President Clements shared highlights and achievements from the City of Clemson and Clemson University. They also spoke on a variety of collaborative efforts, including the completion of the first phase of the Green Crescent Trail system, the Kite Hill Recycling Center as an additional dropoff point for the community, the working relationship between City and University public safety entities, and a partnership to build eight new pickleball courts in Nettles Park. Both Clements and Halfacre agreed that the City and the University are at their best when they work together.



## Clemson Music Fest 2024

The inaugural Clemson Music Fest was held April 19th and 20th on the Clemson University intramural fields. This joint City-University effort brought two days of music, merriment, and memories just before the return of Summer break.

The festivities kicked off Friday with DJ Slim McGraw. Also taking the stage were DJ Zen, Doug, Ax and The Hatchetmen, Lost Kings, and Two Friends. The night was capped off with a performance by T-Pain.

Saturday's shenanigans picked back up with Take Two Band. Also performing were Evanmac, DJ Boss Austin, Lover (Taylor Swift Tribute), DAZR, Sun Room, Seabash, Arizona, Daisy Chain, and The Fray. Mt Joy closed out the night - and the first Clemson Music Fest.

Thank you to everyone who made the event possible! Stay tuned for more live tunes in Clemson!

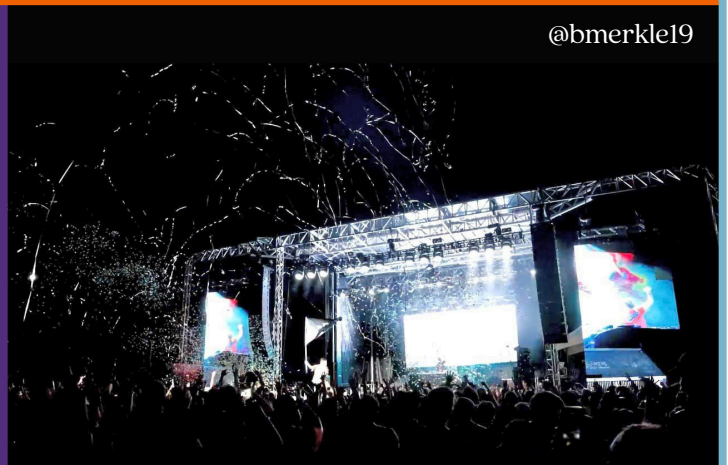
@willenbrock.photography



CLEMSON MUSIC FEST



@willenbrock.photography



@bmerkle19



Memorial Day through Labor Day  
8am to 8pm



## SNOW CENTER COMMUNITY ACCESS

**Daily Passes:** \$7.50 per day per vehicle  
**Season passes:** \$52 per season

### See You at Snow!

Now through Labor Day, the beach at the Snow Recreation Center is open to the community! Purchase a season pass for \$52 or pay for a daily pass through Clemson University Parking Services.

Please note: a daily or seasonal pass does not guarantee a visitor access. Access is available on a first come, first serve basis, which will be determined by parking. Visitors must park in a valid parking space.

For more information, contact Clemson University Campus Recreation at 864-656-3453 or scan the QR code at the right.





# Recreation Refresh



## Kilgore Playground Reopening

The new William Kilgore Playground opened to the public this April, just in time for the spring and summer weather. In addition to City staff and volunteers, the Parks and Recreation department was honored to have family members of William Kilgore III in attendance. Pictured are Brittany (sister), Melissa (aunt), Tommy (uncle), and Julie (Aunt). William's teachers and school staff also showed up to support. Thank you to the hard working Parks and Rec team for creating a safe, fun, and vibrant space for our community's children!



## Dawson Park Shelter and Restrooms

On Saturday, April 27th, Parks and Recreation held a ribbon cutting for the new shelter at Dawson Park. Public Safety Officials also held a Community and Police Field Day in honor of Child Abuse Prevention Month. Thank you to Mayor Halfacre and Council, Parks and Rec Staff, the Police and Fire Departments, and our community partners (First Steps, DHEC, Be Safe, The Parenting Place) for participating. The Dawson Park shelter and bathrooms are open for use!



## Art in the Park: A Rotary Park Enhancement Project

The G R Shaw Center for Housing and Economic Growth is focused primarily on improving homes and affordable housing, but they are also invested in making Clemson a better place to live and work. The Shaw Center's mission is to make the Clemson community sustainable, inclusive, safe, and livable. The Center's vision is to have a Clemson where every person lives in a safe and caring community. This vision includes the parks within our neighborhoods, the Shaw Center submitted a grant application to the Pickens County Recreation Funds to enhance Rotary Park in the heart of a minority neighborhood with a colorfully painted picket fence. The proposal was to develop a unique and creative art project that would be produced primarily by local children; the children were invited to participate in painting individual pickets to create a fun, diverse, and eclectic picket fence.

When the grant was awarded to the Shaw Center, Elaine Richardson and John Fulmer took leadership for the project. The pickets were primed and then paint parties were scheduled at New Hope Baptist, Fort Hill Presbyterian, Abel Baptist, Clemson Child Development Center, and The Arts Center as well as several individual parties. Participants were provided with a fence picket, brushes, and their choice of paint colors and instructed to paint anything to represent their family, their community, themselves, or things they love to do. The pickets were then sealed with polyurethane before being erected at Rotary Park where the fence now serves as a colorful backdrop for this City park, which, like all City parks, is open to everyone.

This project was made possible by the Shaw Center's partnerships with the City of Clemson (especially Urban and Park Land Management and The Arts Center), Fort Hill Presbyterian, New Hope Baptist, Abel Baptist, and Lowe's. A custom engraved plaque recognizing the Shaw Center will be placed on the fence, and a celebration to showcase the art project and engage the community will be held soon.

*Contributed by Elaine Richardson*





# See Athletic Achievements Here

## South Carolina State Champions

8U Boys Basketball



Daniel High Football



12U Girls Basketball



Daniel High Marching Band



14U Boys Basketball



Daniel High Soccer



17U Boys Basketball



Clemson's athletic excellence begins early. Over the past few years, our recreation teams have won multiple state titles as have several Daniel High School teams. Four basketball teams (8U, 14U, and 17U Boys and 12U Girls) are the most recent recreational team state champions. Daniel High also had several state championship wins with Football, Marching Band, and Soccer each bringing the title to Clemson.

## National Champions

Clemson University Men's Soccer brought home the program's fourth national title and the second title for Head Coach Mike Noonan.

Clemson University Men's Soccer



Call My Name 5K



## City Champions

IT Director Lowell Arwood and Mayor Robert Halfacre participated in the Call My Name 5K in February. Mayor Halfacre even earned 2nd in his age group!



# See Recognition Here



## Life Saving Award: Sergeant Amanda Mills

City of Clemson Police Sergeant Amanda Mills was presented with the Life Saving Award at a recent City Council meeting. Sgt Mills previously served as the Clemson Elementary School Resource Officer and was well-liked by students, faculty, and staff during her tenure. This winter, while she was off-duty and visiting the school to say her goodbyes, she noticed a child choking in the lunch room and immediately jumped into action, performing the Heimlich maneuver and saving the child's life.

Thank you, Sgt. Mills for your dedication to keeping our children and our community safe!

## Child Abuse Prevention and Crime Victims Rights

Mayor Halfacre proclaimed April as "Child Abuse Prevention Month" and the week of April 21st through 27th as "Crime Victims Rights Week" in the City of Clemson. Victims Services Coordinator Sonya Morton and Chief Jorge Campos were in attendance to accept these proclamations. The theme for Child Abuse Prevention Month this year was **"Building a Hopeful Future, Together,"** focusing on creating a nurturing and supportive environment for children and families across the nation. The theme for Crime Victims Rights Week was **"How would you help? Options, services, and hope for crime survivors,"** which asks all of us how we can help crime victims. Throughout the month, VSC Morton setup informational tables at various City events, worked with organizations to plant pinwheel gardens, and organized the Child Abuse Prevention Walk at Nettles Park.



## Victims Services Coordinator Receives State Award

City of Clemson Victims Services Coordinator Sonya Morton was recently honored with the Outstanding Service Provider award from the South Carolina Victim Assistance Network. Congratulations, Sonya, and thank you for everything you do!



## Miss Clemson Pageant Winners

The 2024 Miss Clemson pageant was held January 27th at Daniel High School. On February 19th, City Council recognized three of these newly crowned ladies, who each gave a brief overview of their community service initiatives. Miss Tigertown Teen Maddie Hernandez's initiative, "You Are Not Alone," advocates for mental health resources among youth. Miss Clemson Teen Mattie Porter's initiative, "Let Your Legacy Live On," advocates for living a healthy lifestyle and committing to becoming an organ donor. Miss Clemson Davis Wash's initiative, "Defining Difference," highlights learning disabilities across the state of South Carolina. Miss Tigertown Kristin McJunkin was unable to attend.

This summer, these ladies will represent the Clemson community in the Miss South Carolina and Miss South Carolina Teen competitions, competing for the crown and scholarships. Congratulations to these ladies! Good luck this summer.





# See Diversity Here

## ClemsonLIFE Day

The ClemsonLIFE program was founded on the belief that young adults all go through a similar development process that requires certain activities, experience, and support in order to develop skills and understanding about themselves and the world around them in order to fully participate in society and to become successful, contributing adults. This program offers a post-secondary collegiate experience that prepares young men and women with intellectual disabilities for competitive employment and independent living through functional academics, independent living, employment, and social/leisure skills in a public university.

The ClemsonLIFE students are an integral and inspirational part of our community. The program has 42 current business partners. ClemsonLIFE students are employed in 13 locations on campus and 29 locations off campus where they form lasting bonds and connections with their employers, coworkers, and patrons while learning valuable life skills.

Over the last 15 years, more than 100 ClemsonLIFE students have graduated, more than 40 of whom are living in Clemson. Of those graduates, 97% are employed and 67% live independently. Program coordinators, volunteers, parents, and students attended the May 6th City Council meeting where one student, Chris Garcia, gave the invocation and another student, Emily Terzich led the group in the Pledge of Allegiance. Mayor Halfacre also proclaimed May 6th as ClemsonLIFE Day in the City of Clemson and recognized the achievements of the ClemsonLIFE students and graduates and the dedication of the ClemsonLIFE staff and volunteers. Program coordinator Erica Walters shared more about the program and expressed her gratitude for the Clemson community.

To learn more about ClemsonLIFE, visit <https://www.clemson.edu/education/programs/programs/culife/>



## Women's History Month

Mayor Halfacre proclaimed March as Women's History Month in the City of Clemson in recognition of the efforts, contributions, and sacrifices of women in our city, state, and country. Throughout history, the vision and achievements of women have strengthened our country, opening the doors of opportunity wider for all of us, but the role of these women has too often been overlooked and undervalued in American history. Women's History Month encourages us all to learn more about the integral role of women in our community.



## Black History Month

In 2021, Council Member Alesia Smith spearheaded an initiative to recognize black community members during Black History Month, allowing us to share their stories with our entire community. Each February, Council has had the opportunity to highlight the contributions and lasting impacts of our black citizens on our community as well as the tenacity and resilience required to create those impacts. This year, City Council recognized five individuals for their contributions.



Mia Tensley is a Reading and College Skills Instructor at Tri-County Technical College and has served as Chair of the Friends of Clemson Area African American Museum for three years and the Juneteenth coordinator.



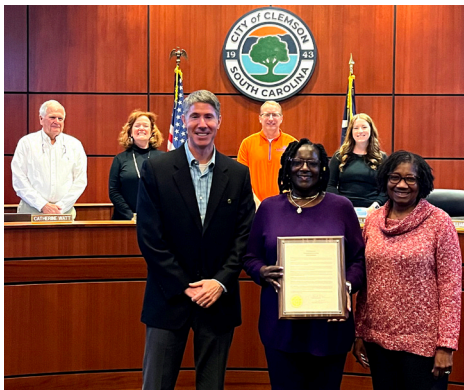
Dr. Kenneth Robinson is an associate professor at Clemson University conducting valuable research on the historical Black communities and the impact of gentrification and served on the ClemsonNEXT Steering Committee.



Rev. Joe Grant is a decorated Army and Operation Desert Storm veteran who is now a US Postal Worker and mail carrier and Pastor of Greater Faith Baptist Church. He is a member of Clemson United for Racial Equity (CURE).



Felicia Greenlee works as a part time museum assistant at the Clemson Area African American Museum and an artist devoted to creating art that highlights the black experience in America and invokes social change.



Judy Randolph is a lifelong Clemson resident. She is a founding member of the Shaw Center for Housing and Economic Growth, Vice President of SMOOTH, and cofounder of the Pickens County African American Parent Coalition.

## Mark Your Calendar

### June

*Pride Month, Black Music Month*

- 9 Race Amity Day
- 12 Pulse Remembrance
- 16 Father's Day
- 19 Juneteenth
- 20 World Refugee Day
- 20 Summer Solstice/First Day of Summer
- 22 International Being You Day
- 28 Stonewall Day

### July

- 1 National Postal Workers Day
- 4 Independence Day
- 14 International Nonbinary People's Day
- 16 International Drag Day
- 26 National Disability Independence Day
- 30 International Day of Friendship

### August

- 7 Purple Heart Day
- 9 International Day of the World's Indigenous People
- 12 Middle Child Day
- 13 Left Handers Day
- 21 Senior Citizens Day
- 22 Rainbow Baby Day

## ADA Legislation

On April 24, 2024, the Federal Register published the Department of Justice's final rule updating its regulations for Title II of the Americans with Disabilities Act (ADA). This rule requires state and local governments to make sure that their services, programs, and activities are accessible to people with disabilities. Title II applies to all services, programs, or activities of state and local governments, from adoption services to zoning regulation. This includes the services, programs, and activities that state and local governments offer online and through mobile apps. The City of Clemson strives for accessibility and will continue to work towards improving accessibility in accordance with these new guidelines.



# See Sustainability Here



## Citizen Scientists at Tottie's Place

Students in the Daniel High School RiSE Environmental Club worked with Urban and Park Land Management on a Citizen Scientist project centered around trees at Tottie's Place Park. Students determined the genus and species of each tree, measured the Diameter at Breast Height (DBH) using Diameter Tape and tree height using a clinometer, then entered this data into the City of Clemson's ArcGIS Tree Inventory. They also entered the data into the iTree program to determine monetary and ecological value of the trees at Tottie's place. These values were then posted on trees along the trail. They also participated in an Arbor Day Event, planting three understory trees at the Park.

Through this project, these students learned about the importance of canopy mapping and tree inventories and gained valuable experience completing a real world, hands on project. Their work will also help the City of Clemson to make more well-informed decisions in new tree plantings to ensure biodiversity and longevity.



## Tree Planting at Clemson Elementary

In late February 2024, more than 70 volunteers, including several children and teens, spent a Saturday planting 55 trees at Clemson Elementary. These 55 trees will filter 11,224 gallons of stormwater in the next 25 years, store 92,763 pounds of carbon in the next 25 years, and remove 605,000 miles of car emissions from the atmosphere per year at maturity.

Thank you to TreesUpstate, Clemson Elementary School, the School District of Pickens County, and all of these volunteers for all of their efforts to #GrowAGreenerClemson.

For more on TreesUpstate, including more volunteer opportunities, visit <https://treesupstate.org/>



# #GrowAGreenerClemson





## Abernathy and Jaycee Park Clean-Up

Students from the Clemson University Leadership Signature Program cleaned up trash and spread mulch at Jaycee and Abernathy Parks on a rainy Wednesday in April. Those who complete the program earn the Leadership Certificate to signify their dedication to developing their leadership capabilities while also contributing to others' development. Students organized the park cleanup to fulfill the customer service portion of the program and signed up to volunteer through the City of Clemson's Friends of the Parks Program. Mayor Halfacre joined the group as well, demonstrating his dedication to service in leadership.



Scan the code above to volunteer as a Friend of the Park!



# See You Here at Jaycee Park

98 Edgewood Ave

### What the youngest people will like:

- The play structure does not have too many bigger kids
- The park is surrounded by trees and has plenty of shade
- The Tulip poplar drops beautiful flowers to collect
- Small fish can be found in the stream.

### What parents will like:

- Swings are available to keep an eye on your young people
- The park is in close proximity to several local coffee shops, so you can sip on a caffeinated beverage while the kids play
- Stroll down the sidewalk in one direction to get to downtown or the other direction to get to Abernathy Park

### What older people will like:

- This park is downtown, but not quite on the main road.
- You can hear Northern Cardinals, Red-bellied Woodpeckers, House Finches, and Carolina Wrens, so get out your Merlin app!

*Regardless of your age, we are sure you'll love Jaycee Park!*



**TREE CITY USA**  
An Arbor Day Foundation Program

## Tree City USA

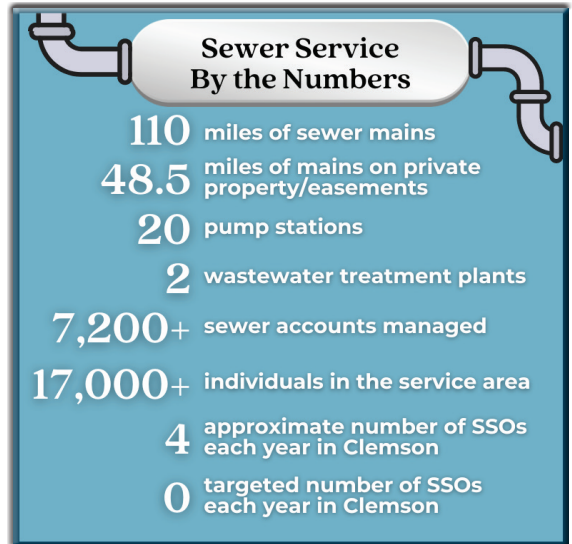
The City of Clemson has been named a Tree City USA for the 11th year! The City is proud to earn this designation for another year to honor our commitment to effective urban forest management and maintenance of our tree canopy, which is currently at 48%.



# See Infrastructure Improvements Here

City of Clemson Utilities is dedicated to providing critical wastewater services that protect both the environment and public health. The wastewater collection division of the department conducts maintenance of the City's sanitary sewer system to ensure that it operates properly as inadequate operation and maintenance may result in failures in the system, which may then result in sanitary sewer overflows (SSOs).

A Sanitary Sewer Overflow, or SSO, is the discharge of raw wastewater from the sewer system out onto the ground or into a waterway. This is a release of waste onto private or public property and adjacent creek or stream. These spills have various causes, the principal ones being the buildup of fats, oils, and grease in the pipes and blockages from inappropriate materials such as flushed wipes and paper towels or root intrusion. Preemptive maintenance greatly reduces the number of SSOs that occur, but not all SSOs can be prevented during heavy rainfall events or if inappropriate materials cause a blockage.



The City of Clemson Utilities Department is required by state and federal laws to prevent sanitary sewer overflows and regularly inspect and clear the sewer mains owned by the City of Clemson. Sanitary sewer mains are primarily located underground and are connected by a series of manholes that are either at or slightly above ground level. In order to maintain the system or respond to SSOs, the Utilities staff must have access to manholes at all times. However, nearly half of these manholes are located on private property, so these portions must be placed into easements.

Easements are dedicated portions of private property dedicated for public use. Sanitary sewer easements overlay the location of a sewer main on a property and provide the City right of access to the property for inspection and maintenance purposes, which is a requirement of the SCDHEC Sewer Collection System Operating Permit. They are developed at the time the utility is constructed or when a piece of property is subdivided for use. Sewer easements are often shown on property surveys and descriptions of land such as a deed.

## Clearing Plants and Trees from an Easement

Root intrusion is one of the main causes of sewer line backups, so trees must be planted at least ten feet away from the pipeline; those already within ten feet must be removed. Trees, bushes, and brush must be cut away from these areas to maintain access to the sewer line for maintenance work such as inspection and cleaning. This maintenance minimizes the impact of overflows by preventing the backup completely or allowing more immediate access to the area and saving valuable time in the event of an SSO.

The City is not required to replace vegetation if it hinders future access to the easement. Upon clearing the easement the damaged areas will be re-graded and sown with grass seed and straw. The easement will then be maintained as necessary to allow for continued access.

The goal is to have 100 percent of our easements accessible for maintenance work. However, several older easements with heavy growth are selected for clearing based upon maintenance records for the area and if SSOs have been a reoccurring issue.

## Fences, Sheds, and Structures

If you already have fences, sheds, or other constructions in the easement area, you will not be grandfathered in and allowed to keep them, no matter how long they have been there. However, where possible, the City will work with property owners to allow existing fences to remain that are parallel to the direction of the sanitary sewer main under certain conditions.

*For more information, contact the Utilities Department at 864-653-2046.*

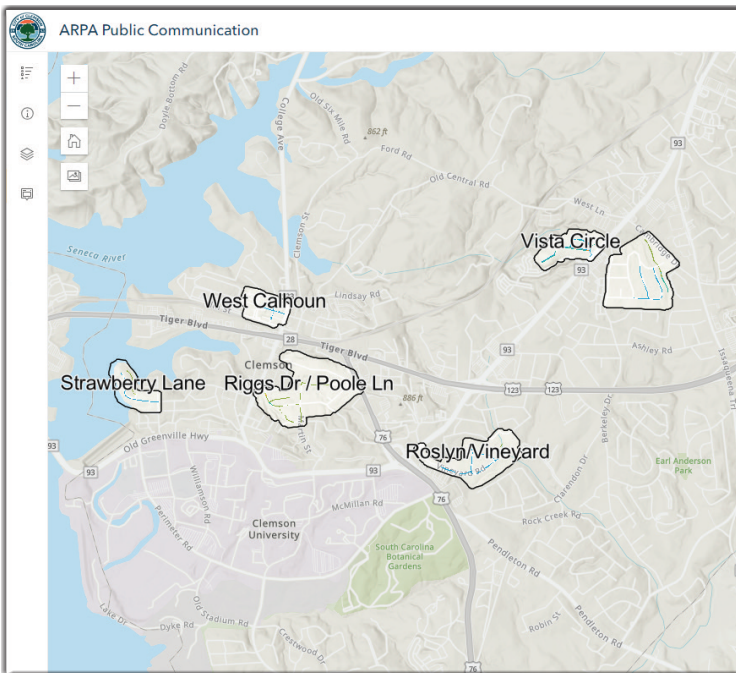


## American Rescue Plan Act Projects

In 2021, the City of Clemson received over \$8 million in American Rescue Plan Act (ARPA) funds, the majority of which has been delegated to replacing aging utility infrastructure in the area. Construction on the first of six focus areas for these projects is nearing completion after weather and other issues resulted in some minor delays. This project, located on Strawberry Lane, includes over 1,200 feet of new six inch water lines, 480 feet of two inch water lines, and over 780 feet of wastewater lines.

The Contractor (GAR-CON, Inc.) is now working in the Meadow Rose Neighborhood, replacing water lines and rehabilitating wastewater lines. Other projects are planned for Riggs Drive and Pool Lane, the West Calhoun area, Vista Circle, and Monaco Estates.

*Please visit the City's ARPA webpage for more information and additional updates.*

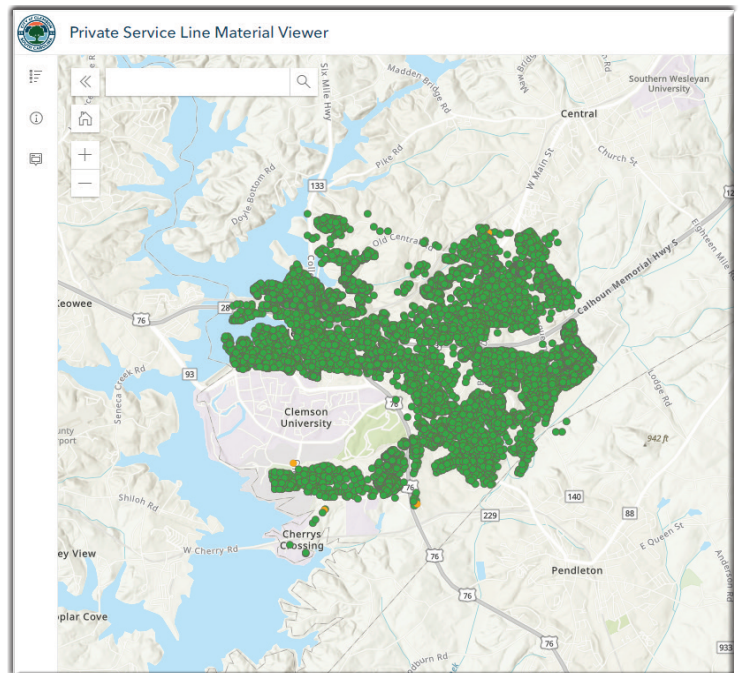


## Lead Service Line Inventory Update

The City of Clemson has completed its assessment of the City's water lines in compliance with the Environmental Protection Agency's (EPA) recent ruling aimed at reducing the risk of lead in American drinking water. This federal mandate requires all water systems in the United States to verify the material of every water service line in its system.

The City of Clemson has cleared all 7,205 service lines in the system. Of these lines, *none were found to be lead*. Thanks to the hard work of the Utilities Department and the help of the community, the City was able to complete the project and achieve compliance five months ahead of the October 16th, 2024 deadline.

*For more information on the Lead Service Line Management Program please visit [nolead.org](http://nolead.org) or contact the Utilities Department at 864-653-2046.*



# Annual Water Quality Report

The City of Clemson has completed its annual Water Quality Report, (or Consumer Confidence Report), for Calendar Year 2024.

Continuous testing is performed on City water to assure it meets all state and federal standards. This annual report shows that the City of Clemson's drinking water met or exceeded these standards in 2023.

The electronic copy may be obtained by scanning the QR code at right or visiting the City's website. A physical copy may be picked up at City Hall.



*For more information, contact the Utilities Department at 864-653-2046.*

**Benjie McGill**  
[bmcgill@cityofclemson.org](mailto:bmcgill@cityofclemson.org)

**Teddy Atkins**  
[tatkins@cityofclemson.org](mailto:tatkins@cityofclemson.org)



# Fire Marshal Minute: Have a Safe Summer!

The summer season has arrived, bringing beautiful weather for fun in the outdoors, including lake days and grilling with family and friends. However, fun in the sun can quickly go awry without the appropriate safety considerations.

## Hydrate!

When working outdoors or doing any outdoor activity, make sure that you have plenty of water to drink. The body is made up of 50 to 75% water. Water forms the basis of blood, digestive juices, and perspiration. The body cannot store water. You need to refresh the water in your body regularly to make up for the losses.

## Keep in Touch!

If you are going hiking, fishing, or just out for a long walk, be sure someone knows where you are going. This information can be a vital help to first responders if something happens on your outing. While the temptation may be to completely disconnect, your cell phone could also save your life. Your phone may be able to be tracked even if you can't text or call. Leave with your phone battery fully charged, and take a backup power supply if possible.

## Stay Afloat!

When boating or fishing from a boat, be sure to wear the proper flotation device. On average, 650 people die each year in boating related accidents. The Coast Guard estimates that life jackets could prevent 75% of these boating related fatalities. Additionally, while equipment and environmental factors may cause boating accidents, the vast majority are caused by human error or poor judgement. If you plan on boating this summer, prepare by participating in free boater safety checks and attend safe boating courses. Then, when you're on the water, carry lifesaving emergency distress and communications equipment, wear a life jacket, and stay sober as alcohol can impair your response in an emergency.

## Contain the Spark!

When grilling, keep your grill at least 25 feet from combustible material. Any closer and sparks from a grill can easily travel and start a fire on dry flammable material. Have a way to extinguish a fire nearby when grilling or gathered around an outdoor fireplace. *Please note: only approved outdoor fireplaces are allowed in the City, and they must be 25 feet from combustible material with a spark arrester. The City does not allow burning of materials inside the City limits.*

## Deploy Sun Shield!

Use the proper sunscreen when working outside, hiking, or fishing. Sunburns are painful and can have lasting effects. Wearing a hat also helps keeping the sun off your head and sweat out of your eyes.

June							2024 Mosquito Fogging Schedule						
Sun	Mon	Tue	Wed	Thu	Fri	Sat							
						1							
2	3	4	5	6	7	8							
9	10	11	12	13	14	15							
16	17	18	19	20	21	22							
23	24	25	26	27	28	29							
30													
July							August						
Sun	Mon	Tue	Wed	Thu	Fri	Sat	Sun	Mon	Tue	Wed	Thu	Fri	Sat
	1	2	3	4	5	6					1	2	3
7	8	9	10	11	12	13	4	5	6	7	8	9	10
14	15	16	17	18	19	20	11	12	13	14	15	16	17
21	22	23	24	25	26	27	18	19	20	21	22	23	24
28	29	30	31				25	26	27	28	29	30	31

- Monday Garbage Route
- Tuesday Garbage Route
- Wednesday Garbage Route
- Thursday Garbage Route
- City Holiday - No Fogging

**If you have any questions regarding this schedule, contact Mitchell Swaney at 864-653-2047.**

**Practical solutions in order to reduce the need for pesticide spraying:**

1. Keep gutters free of debris to eliminate standing water.
2. Drain or fill low places where water stand on property.
3. Turn over containers on property to reduce standing water and possible mosquito breeding sites.
4. Dispose of old tires properly which are prime breeding areas.
5. Keep swimming pool pumps operating and pools chemically balanced to reduce area for mosquitos or encourage property owners to drain pools not in use, and other similar practices.





SOUTH CAROLINA  
**BOTANICAL  
GARDEN**  
at CLEMSON UNIVERSITY

Please note that events may require a fee and/or pre-registration.  
Visit <https://www.clemson.edu/public/scbg/events/events-calendar.html>  
for more information.

## Beginner Butterfly Gardening

Celebrate National Pollinator Week by learning how to contribute to the health of pollinator populations while beautifying your landscape! Designed for adults.

Tuesday, June 18th or August 17th  
1pm - 3pm

## Docent Orientations

Orientation will introduce attendees the Garden's various weekday and weekend volunteer opportunities and provide necessary information for becoming an SCBG docent. Event is Free; registration requested.

Saturday, June 15th or Saturday, August 17th  
1pm - 3pm

## 2024 Summer Camps

For ages 6-11

Drop off between 8am and 9am; Pickup at 3pm

June 3rd - 7th	Mountains to Sea
June 10th - 14th	Garden Discovery
June 17th - 21st	Creativity
June 24th - 28th	Creature Power
July 8th - 12th	Great Green Adventure
July 15th - 19th	Circle Up! STEM Adventure
July 22nd - 26th	Time Travelers

## Saturday Garden Tours

These guided tours focus on the Garden's history, development, and seasonal highlights. All ages welcome.

June 1st, July 6th, or August 3rd  
10:30-11:30 am



## CCRC AFTER-SCHOOL CARE

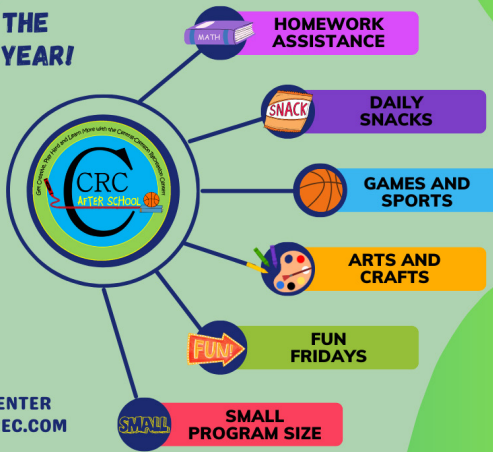
REGISTER NOW FOR THE  
2024/2025 SCHOOL YEAR!

SPACE IS  
LIMITED SO  
DON'T DELAY

Let your child spend the  
afternoon in a caring  
environment where they  
can create, play and learn!



CENTRAL-CLEMSON REC CENTER  
[WWW.CENTRALCLEMSONREC.COM](http://WWW.CENTRALCLEMSONREC.COM)  
864-624-1138



SUMMER SPLASH GIVES  
YOU ALL THE ACCESS OF A  
REGULAR MEMBERSHIP  
WITH NO JOINING FEE AND  
NO LONG TERM  
COMMITMENT.



**SUMMER  
SPLASH  
GYM  
MEMBERSHIP**

2 POOLS, WEIGHT ROOM,  
FITNESS CLASSES, WATER  
FITNESS, BASKETBALL,  
PICKLEBALL AND MORE!

Individual, couple & family  
memberships are available.



JUNE 1ST - AUGUST 31ST

130 Commons Way,  
Central, SC 29630  
864-624-1138  
[centralclemsonrec.com](http://centralclemsonrec.com)



Scan the QR code to learn  
more about CCRC.



**STUDENT GYM  
MEMBERSHIPS  
START  
AUGUST 1ST**

5 Months For Just \$99  
No Joining Fee  
And Full Facility Access

[CENTRALCLEMSONREC.COM](http://CENTRALCLEMSONREC.COM)  
864-624-1138



contact us for details

**GROUP  
SWIM  
LESSONS**

THIS  
**summer**  
AT CCRC



**MAKE A SPLASH  
WITH US!**

Swim lessons help build  
lifesaving skills and  
confidence!

**CONTACT US FOR DETAILS**

**CENTRAL-CLEMSON REC CENTER**  
130 Commons Way, Central, SC 29630  
[centralclemsonrec.com](http://centralclemsonrec.com) / 864-624-1138



# CCDC Rehabilitation Continues

*The Clemson Child Development Center has entered Phase 3 of their facilities rehabilitation.*

CCDC recognizes that the development of school readiness begins in the first five years of life and strives to support and promote the developing brain in a manner that creates a foundation for lifelong learning in each area of development: physical-motor, cognitive, social-emotional, and language domains. CCDC is an A+ rated school within the South Carolina ABC Quality rating system. Maintaining that rating makes it possible for over 50% of students to attend CCDC through ABC tuition scholarships. This program evaluates centers on the quality of their environments, including playgrounds. The CCDC playground is in need of renovation to meet the standards required by the ABC Quality Rating System, and it is imperative that this insufficiency is addressed promptly and effectively.



In the past decade, the benefits of children engaging with nature have been well documented in numerous scientific research publications. Collectively, this body of research shows that children's physical, intellectual, social, emotional, psychological, and physical health are positively impacted through daily contact with nature. Time spent outdoors playing is directly correlated with the benefits children will gain from indoor instruction, and outdoor spaces at CCDC are an integral part of enhancing and improving the care and education students receive.

In order to address these playground insufficiencies and incorporate meaningful engagement with nature, CCDC is partnering with Grow Outdoors South Carolina, ABC Quality, Department of Social Services (DSS), and the SC Department of Health and Environmental Control (DHEC) to create naturalized environments that spark play and learning. Blake Sanders, a certified landscape architect, created new plans that are in alignment with the standards required by ABC Quality and the Natural Learning Initiative (NLI).



The 2024 City of Clemson Leadership class has also been an essential part of this improvement process. This esteemed program offers a unique opportunity for individuals to develop and refine their leadership skills while gaining valuable insights into the Clemson community. Each year, the class develops a community based service project, and CCDC is the beneficiary of this year's project. Participants have worked to help the center move forward with these Outdoor Learning Spaces renovations by removing old playground infrastructure in preparation for new playground construction, hosting a raffle featuring exceptional prizes to generate immediate funds for essential items, and assisting in the construction and funding for outdoor learning stations. Their project made a meaningful impact for CCDC and allowed participants to give back and contribute to the betterment of their community. Faculty, staff, students, and parents are grateful for their contribution to mission of CCDC for choosing to help the center offer a better Outdoor Learning Space.







# ADVENTURE BEGINS AT YOUR LIBRARY! SUMMER READING PROGRAMS FOR KIDS

Central-Clemson Library • 105 Commons Way • Central, SC • 864.639.2711

Visit [www.pcls.fyi](http://www.pcls.fyi)  
for more information



HOBLEY FORD

JUNE 3 & 4



THE CRITTER KEEPER

JUNE 10 & 13



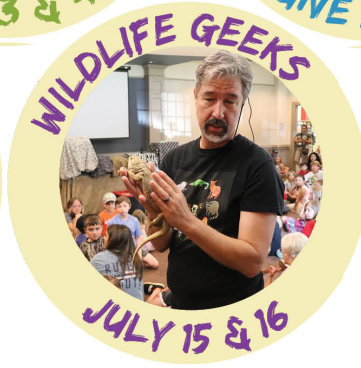
DIGERDOO DOWN UNDER

JUNE 17 & 18



ED'S DINOSAURS LIVE

JULY 8 & 9



WILDLIFE GEEKS

JULY 15 & 16



THE PG SHOW

JULY 22 & 23



DRUM & WORK

JULY 24 & 25

Performances on Mondays: 10am Easley | 3pm Liberty | 6pm Easley  
Performances on Tuesdays (or Thursday June 13): 10am Pickens | 3pm Central

Space for these performances is limited.  
Please arrive early for best chance of viewing the show.



# ON THE FIVE



JOIN YOUR NEIGHBORS, FRIENDS, AND FAMILY ON TUESDAY EVENINGS FOR ANOTHER SEASON OF OUTDOOR DINING AND LIVE MUSIC ON COLLEGE AVE.

5:30pm - 9:00pm | College Ave, Downtown Clemson



June 4

Mckelvie Wilder  
Band



June 11

Xperience Soul



June 18

Randomonium



June 25

The Grateful  
Brothers

No Outside Coolers



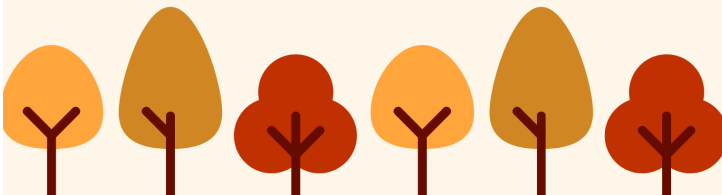


# POP IN THE PARK SECOND SATURDAYS

## RETURNS THIS JUNE!

**THE CRAFT SHOW IS COMING BACK TO  
CLEMSON'S GATEWAY PARK  
WITH MUSICAL GUEST  
CHRISTY WILLIAMSON!  
10 AM - 2 PM**

**JUNE 8TH \* JULY 13 \* AUGUST 10TH**



**GATEWAY PARK  
348 OLD GREENVILLE HIGHWAY  
CLEMSON, SC 29631**

THE PARK IS SHARED WITH CLEMSON PRESBYTERIAN CHURCH.

**FOR VENDOR INFORMATION,  
VISIT [WWW.TAC.CLEMSONCITY.ORG](http://WWW.TAC.CLEMSONCITY.ORG)**



## Clemson Area Youth Theatre Summer Drama Workshops

### Little Stars Onstage *1st and 2nd Grades* July 15th-19th and July 22nd-26th

Young actors and actresses will develop a basic understanding for theatre through games and collaborative activities that will encourage appropriate behavior onstage, getting into a character, and learning basic vocabulary.

### Becoming a Character *3rd-5th Grades* July 8th-12th and July 15th-19th

Students will learn what it takes to become another person on stage, learning the art of characterization through engaging activities that teach students to give purpose to their movements and facial expressions onstage. Through these exercises, students will become more familiar with common theatre terminology used in productions.

### Polishing Your Craft *6th-12th Grades* July 22nd-26th

Students will be encouraged to collaborate with their instructor and peers to create an original script to perform by the end of the week. With guidance from the instructor, students will learn how to choose a genre, main idea, and unique characters for their original play, therefore gaining a better understanding of play creation and characterization.

### Improv! *6th-12th Grades* July 8th-12th

Students will learn how to create unique characters, accept ideas, and support their scene partner onstage through improvisation techniques and activities. These important elements of improv will not only help students onstage but offstage as well.

### Musical Theatre! Triple-Threat Training Intensive *5th-12th Grades*

**June 17th-21st (9th-12th Grades)**

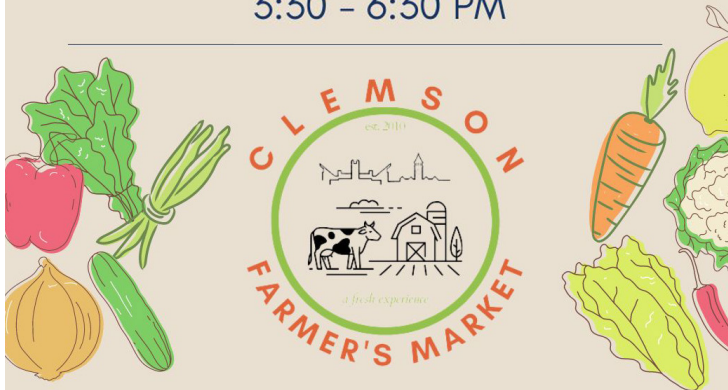
**June 24th-28th (5th-8th Grades)**

Students will be trained in the arts of musical theatre and gain confidence in acting, singing, and dancing by participating in theatre exercises that will grow their skills. This training will assist students in acing their musical theatre auditions.

For more information,  
visit [www.clemsonlittletheatre.com](http://www.clemsonlittletheatre.com)

## Thursdays at Patrick Square

3:30 - 6:30 PM



Fresh Local Produce  
Over 30 Vendors!

Live Music  
Arts & Crafts

Specialty Foods  
And Much More!

Thursdays, May through December 3:30 - 6:30 PM





# Checking in with



Calling all  
D. W. Daniel High Lions  
and supporters!  
Sincerely, Daniel

The Clemson Area African American Museum and For the Love of Community... is compiling stories and memorabilia on black student athleticism at D.W. Daniel High School from 1964 to 2014 for the Sincerely, Daniel exhibition.



*Interested in helping to gather those stories, have stories yourself, and or would like to contribute/loan memorabilia to the exhibit?  
Please contact Angela Agard at [aagard@cityofclemson.org](mailto:aagard@cityofclemson.org)*

## IMLS Grant Funded Oral History Project

CAAAM recently received a federal grant from the Institute for Museums and Libraries Services (IMLS) to document and preserve the living histories of the African American experience of elders, veterans, and legacy land owners of Upstate South Carolina.

This winter, CAAAM completed the oral history community training workshops taught by Dr. Le Datta Grimes, and interviews of our elders are currently underway.



*Interested in becoming an interviewer or a narrator?  
Please contact Journee Jones at [jjones@cityofclemson.org](mailto:jjones@cityofclemson.org) or 864-654-2944.*



## Syncopated Ladies

For the second year, the Clemson Area African American Museum partnered with the Brooks Center for the Performing Arts. This year, CAAAM welcomed Chloe Arnold's Syncopated Ladies on the evening of Tuesday, April 2nd for a reception and a precursor to the Thursday night live performance at the Brooks Center. At this reception, the dancers entertained the community with fierce footwork and provided history of the African American women and tap dancing.

This was the group's first time in South Carolina as part of their national tour. The event was made possible with a grant from the National Endowments for the Arts through the Brooks Center.



## Coming Soon... Nature Trail

In the garden area outside CAAAM, Urban and Park Land Management has been removing the Kudzu and clearing a path for the nature trail.



## Juneteenth 2024

### Legacy of the 1964 Civil Rights Act

Wednesday, June 19th, 2024

11am - 4pm

This Juneteenth, join the Clemson Area African American Museum to honor and pay tribute to the 60th anniversary of the Civil Rights Act.

The Civil Rights Act was signed into law on July 2, 1964 prohibiting discrimination in public settings, forcing the integration of the nation's schools, and making employment discrimination illegal. This event will feature discussions about the significance of the Civil Rights Act and what it means to us today. Entertainment and culturally significant food will be provided for the community to enjoy.

### LET YOUR VOICE BE HEARD!

Record your thoughts about events that took place in the 1960's leading up the passage of the 1964 Civil Rights Act.

*For more on these and other events, visit [caaam.org](http://caaam.org)*





## Osher Lifelong Learning Institute at Clemson

Cheezem Education Center  
100 Thomas Green Blvd, Clemson  
864-633-5242

[olli@clemson.edu](mailto:olli@clemson.edu)

[www.olliatclemson.org](http://www.olliatclemson.org)

OLLI's Spring 2024 term is in full bloom with courses such as Money Matters: A Practical Guide to Managing Financial Risks for Seniors, Gardening like a Painter, Sleep Better, Making Focaccia Bread! Members also participate in free special interest groups in art, Mah Jongg, philosophy, and more! Courses at Clemson OLLI are fine-tuned to members with new courses added frequently.

Registration is now open, and the course catalog is available on OLLI's website or at the Cheezem Education Center!

### AnMed Health Services: Joint Replacement

June 6th at 11am

Cheezem Education Center

Aches and pains might come with age, but for hundreds of thousands of people annually, total joint replacement surgery brings life-changing benefits. Though not for everyone, it could be something to consider. Learn why this type of surgery has become so common and whether it could be something to discuss with a doctor.

This event is free and open to the public, but registration is requested.

To register, please call the OLLI office at 864-633-5242.

### Upcoming International Trips

- *Croatian Coast & the Best of the Adriatic*  
September 20th – October 1st, 2024
- *Greece featuring Athens, Mykonos, and Santorini*  
May 6th, 2025 to May 15th, 2025

## Community Foundation of Greater Clemson: What Legacy Will You Leave?

Prospective donors often ask why they should give to the Community Foundation of Greater Clemson rather than to one of the many other nonprofit organizations serving the area. The answer depends, in part, on the type of gift a donor is considering.

Most nonprofit organizations operate largely on contributions given throughout the year by their supporters. Few have established long-term endowments, which are funds that appreciate over time and provide stable financing into the future. Endowments are often, though not always, built from estate gifts and legacy donations.

CFGC's role is not only to encourage philanthropy, but also to build an endowment that will provide a stable, long-term source of funding to better meet the needs of our community now and into the future.

As you think about the future, about estate or retirement planning, about the kind of legacy you want to leave for our community, consider a gift to the CFGC endowment. This is one way to ensure your influence on future generations and help create a better place for all to call home.

For more information, visit [website.cfgcsc.org](http://website.cfgcsc.org).



**COMMUNITY FOUNDATION**  
OF GREATER CLEMSON

Bright by Text

### Because kids don't come with instructions

We know parenting can be overwhelming. We're here to help, one text message at a time.

Text **SCKIDS** to 274 448 for FREE parenting tips  
Msg & data rates may apply.

Powered by: **United Way**

**PICKENS COUNTY FIRST STEPS**

#### What to expect from our weekly text messages?

- Easy, practical tips and info for parents & caregivers.
- Messages timed exactly to your child's due date or date of birth.
- Info about free services and events based on your zip code.

[first5sc.org](http://first5sc.org)

**First 5 SOUTH CAROLINA**

Get the support your child needs from birth through age five.

We connect families with South Carolina's public services for young children.

Check your eligibility for over 40 services  
Answer a few questions and we'll show you what you qualify for.

**You can now apply online!**



# See Information Here

## June

- 3** City Council
- 4** Board of Architectural Review
- 10** Planning Commission
- 11** Economic Dev Adv. Committee
- 17** City Council
- 20** Board of Zoning Appeals
- 27** Police Advisory Board

## July

- 1** City Council
- 2** Board of Architectural Review
- 8** Planning Commission
- 15** Board of Zoning Appeals
- 18** City Council
- 25** Police Advisory Board

## August

- 5** City Council
- 6** Board of Architectural Review
- 12** Planning Commission
- 13** Economic Dev Adv. Committee
- 15** Board of Zoning Appeals
- 19** City Council
- 20** Parks, Rec, Arts, Culture, Tourism Advisory Committee
- 29** Police Advisory Board

## Summer Schedule 2024

Saturday, May 5th, 2024 - Sunday, August 18th, 2024

Pendleton, Seneca Express, Seneca Business and Seneca Residential Routes will remain on their regular year-round schedules.

The Red-Route will operate on an HOURLY basis...

Monday-Thursday 7:00am-8:30pm

Friday 7:00am-10:30pm

Saturday 10:00am-8:00pm

Sunday 12:00pm-4:00pm

The WalMart-SWU bus will run...

Friday 7:00pm-10:00pm

Saturday 10:00am-6:00pm

Sunday 12:00pm-4:00pm

NO Highpointe/Pier bus

NO Gold-Route bus.

Fall/Spring Schedules will resume  
Sunday, August 18th, at 2pm

**catbus**  
CLEMSON AREA TRANSIT

## Conversations with Council

Conversations with Council will be on hiatus for the summer months.

## City Observed Holidays

**June 19th** Juneteenth

**July 4th** Independence Day

City offices will be closed.

CATbus routes will not run.

Garbage routes will run as normal

## Municipal Court Information

**Wednesday Court Sessions:**

9:00am, 2:00pm, 5:00pm

**Municipal Court Business Hours**

Monday - Thursday 8am to 5pm

Friday 8am to 3pm

## Stay Informed and Updated

Meetings streamed live on the City's Youtube.  
[youtube.com/cityofclemsonsouthcarolina](https://youtube.com/cityofclemsonsouthcarolina)

For the most up to date information or to sign up for email updates, visit [www.cityofclemson.org](http://www.cityofclemson.org)





CITY OF  
**Clemson**

1250 Tiger Boulevard  
Clemson, SC 29631



*Fireworks over Lake Hartwell in Clemson*

visit [www.clemsoncity.org](http://www.clemsoncity.org) for details